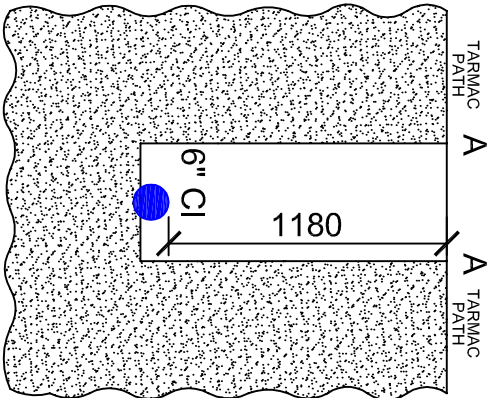
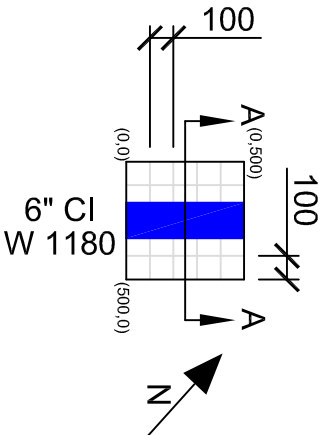


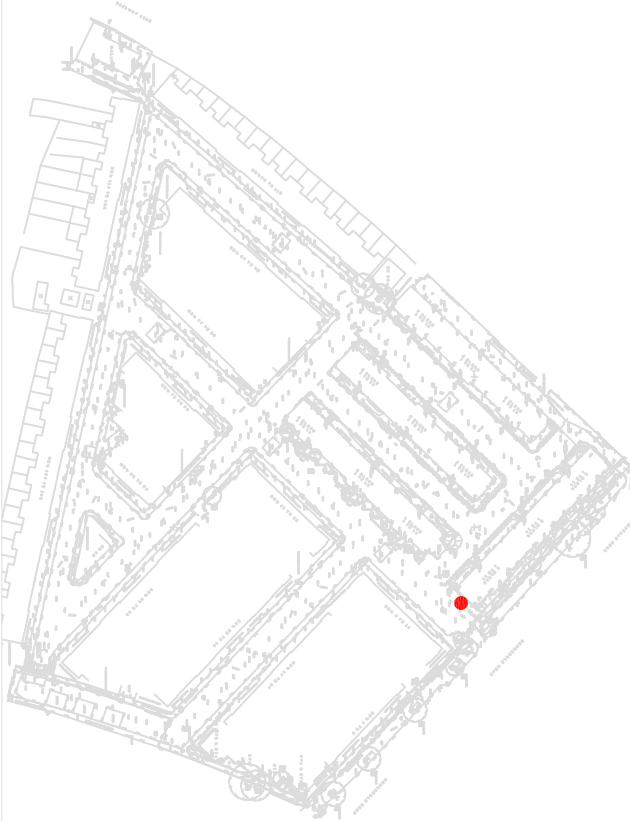
CROSS SECTION



PLAN



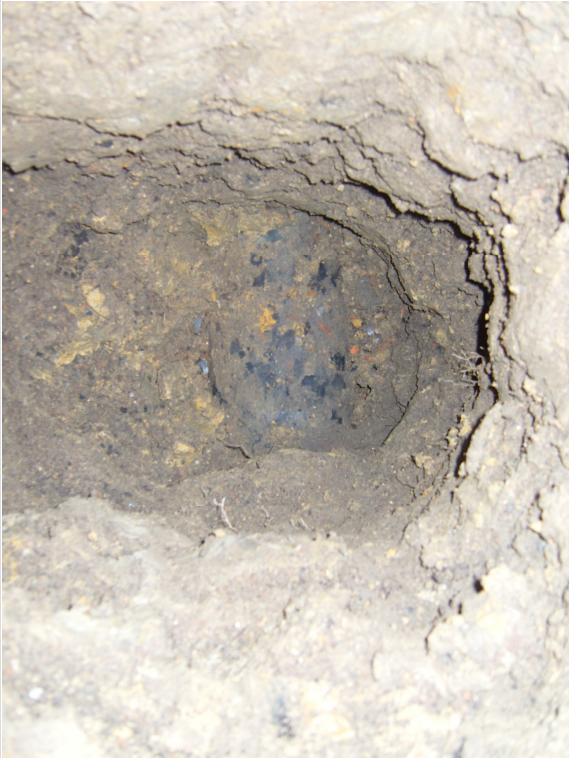
VACUUM EXCAVATION LOCATION



NOTES:

Approximate 6" Cast Iron water pipe in good condition.

INTERNAL IMAGE
(CONDITION)



OPEN EXCAVATION IMAGE



REINSTATED IMAGE



VACUUM EXCAVATION REPORT



www.adien.com

Adien References

Job No:		Survey Date:	
Team Leader:		Dwg Date:	
Drawn By:			
Checked By:			
Drawing No.		Rev:	

Notes:

1. All dimensions are in millimetres unless stated otherwise
2. Do not scale from this drawing.
3. Depths are measured to top of indicated services.
4. No allowance has been made for sub-surface entry into manholes or other combined spaces below ground level. Therefore any details relating to depths, sizes etc are taken from the surface and as such will be approximate only.
5. We have endeavoured to supply you with the most accurate data possible by using methods at the forefront of our industry. We have taken great care in the detection of the pipework and buried features, but as with all methods of detecting underground or buried utilities, the information provided is based on results obtained from electronic and radar scans and as such may be liable to distortion or errors beyond the reasonable control of the operator or his instruments. A correction factor has been applied where this is evident but no responsibility can be accepted for errors, omissions or incorrect data.
6. The data supplied does not remove or reduce the responsibilities of site personnel when working near underground services. Site personnel should refer to the New Roads and Street Works Act 1991, including Chapter 5 - Safe Digging Practices (reproduced from Appendix 7 to HSE Publication HS(G) 47 - Avoiding Danger from Underground Services) for further information.



Service located by Electro Magnetic Detection
e.g. Metallic pipes & cables



Service located by Electro Magnetic Detection
using a sonde e.g. Drainage



Service located by Ground Penetrating Radar
e.g. Plastic pipes or services which could not be
detected using other methods

Cell Name:			
Site Address:			
Easting:		Northng:	
Surface:			
Job No.		Cell ID No.	
Manager:		Office:	